

# Cognizance Identity and Access Management

Identity Management • Authentication • Authorization • Administration

Next generation security solution

## Capabilities and Benefits

- New generation security product increases productivity and enhances security
- Powerful Cognizance Administration Center consolidates identity, access and applications management
- Provides many important integrated security services and applications out of the box
- Provides flexible security policies and roles applicable to multiple systems
- Active rules allow automatic policy generation according to the organization business rules
- Delivers strong multi-factor user authentication
- Reduces administrative workload by delegating a user identity maintenance to the user
- Centrally managed enterprise single sign-on eliminates multiple passwords
- Single sign-on launch panel increases user productivity

Your organization must manage access privileges for employees, business partners and customers, protect sensitive data and applications, while at the same time making them accessible to outside users. You can best meet these challenges with the next generation Identity and Access Management solution, which automates enterprise-wide identity management, simplifies administration, and provides a full range of security services.

## Cognizance Identity and Access Management

Cognizance Identity and Access Management (IAM) is a new generation security solution designed from the ground up on the concept of the unified user identity. A consistent user identity, regardless of how the user accesses the network and applications, significantly reduces administrative complexity and increases productivity. In a single product, Cognizance IAM consolidates most important inter-dependent administrative functions including user management, identity provisioning, access policy and application management. In addition to increasing management efficiency, this combination of functionality allows centralization of the security architecture and consistency of the enterprise security model.

## Integrated Applications and Access Control

Cognizance IAM integrates access control and administration for a large number of security applications including network logon, Web applications access, single sign-on, VPN, and more. Access privileges are implemented through the use of a Role-Based Authorization and Access Control (RBAC) paradigm. The benefits of RBAC are that it reduces the number of relationships, reduces changes and duplication of access control information and further reduces management costs.



One Solution - Complete Identity Control

## Strong multi-factor authentication

Cognizance IAM comes out of the box with the full support for multifactor user authentication, including any combination of dynamic or single-use passwords, smart cards, USB tokens, certificates, virtual tokens, and biometrics. A user may have multiple alternative authentication methods that can affect the user access privileges.

## Security Policy and Roles

Cognizance IAM has a powerful dynamic role-based policy engine. Policies comprise of elements including authentication methods, time, date, IP address, access protocol, and active rules. The active rules provide automatic policy and role generation according to business rules defined in the organization. The policy engine instantly processes user properties such as job description, unit, or location, automatically creating the corresponding access rights and roles eliminating the need for administrator to set policies manually.

## Cognizance Corporation

6591 Sierra Lane, Suite C  
Dublin, California 94568  
Phone: 925-556-6900  
Fax: 925-556-6901

E-mail: [info@cognizancesecurity.com](mailto:info@cognizancesecurity.com)  
[www.cognizancesecurity.com](http://www.cognizancesecurity.com)

# Cognizance Identity Services Framework

Identity Management • Authentication • Authorization • Administration

## Capabilities and Benefits

- Allows to store user identity on smart cards, USB tokens, and virtual tokens
- Distributes administration throughout the enterprise with delegated administration
- Integrates with most popular enterprise directories, including Active Directory, ONE Directory (iPlanet) and eDirectory
- Includes flexible reporting and auditing subsystem
- Scalable and high performance solution supports large-scale deployment
- Fits well to managed security services and multiple enterprise model
- Deploys easily on existing enterprise directory without separate database requirements

## Cognizance Corporation

6591 Sierra Lane, Suite C  
Dublin, California 94568  
Phone: 925-556-6900  
Fax: 925-556-6901

E-mail: [info@cognizancesecurity.com](mailto:info@cognizancesecurity.com)  
[www.cognizancesecurity.com](http://www.cognizancesecurity.com)

## Cognizance Administration Center

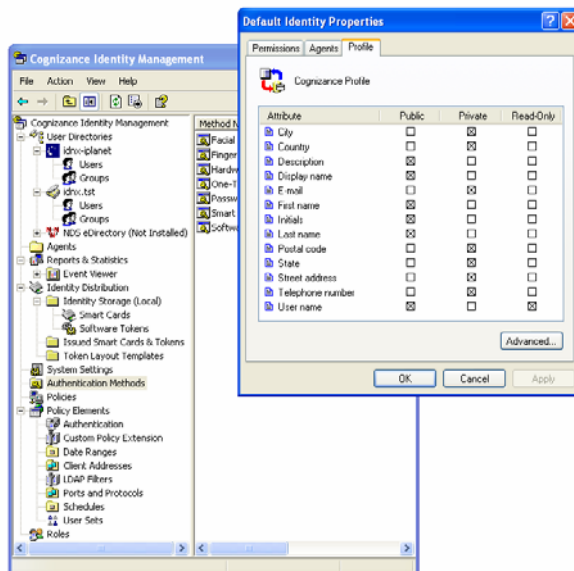
Cognizance Administration Center integrates and standardizes existing security systems and provides complete user identity and access privileges management through a flexible and intuitive user interface. A Cognizance administrator can also configure built-in applications, register new single sign-on applications and manage users and user profiles in multiple enterprise repositories. Administrative efficiency increases because a single Web-enabled Administration Center replaces multiple custom administrative tools.

## User self-service

Cognizance IAM enables a user to perform complete life cycle management of the user-identity within the enterprise security policy guidelines. User self-service significantly reduces administrative workload by making the user responsible for maintenance of his identity. Supported self-service functionality includes new user sign up, profile maintenance, credentials registration, adding SSO applications, issuing and installing certificates and adding network and VPN accounts and more.

## Flexible and scalable enterprise architecture

Cognizance IAM was developed as a flexible expandable and scalable framework. The Cognizance server can support very large-scale deployment topologies with sustained availability and performance. Cognizance IAM SDK lets the customer easily add support for additional data repositories, authentication methods, custom policies, and applications.



## Built-in security applications

Cognizance IAM supports intranet, extranet, and legacy systems with its built-in applications and services. The following security applications are included:

- User self-service and identity life-cycle management
- New user sign up service
- Network logon for Microsoft Windows® and Novell Netware®
- Support for Microsoft Terminal Services and Citrix Metaframe
- VPN and Remote Access
- Enterprise Single Sign-On
- PKI service
- Web applications access
- Smart card and virtual token life cycle management